

COMPANY PROFILE

PT. KROMO SAKTI MANDRAGUNA

**Provision Of Fabricated Machining, Trading
Engine, Automation, Supplier Equipment Oil &
Gas**

OFFICE & WORKSHOP :

**Pergudangan Bizpark3
Blok D No.56B Kali Baru,
Medan Satria, Bekasi Jawa
Barat**



Telp No :(021)89490259

Email;Sales.ptksm@gmail.com,mdafaksm@gmail.com

COMPANY PROFILE



NAMA: PT. KROMO SAKTI MANDRAGUNA

PT. KROMO SAKTI MANDRAGUNA

OFFICE: Pergudangan Bizpark 3 Blok D No. 56B Kali Boru, Medan

Satria, Bekasi Jawa Barat

NO. TELP: (021)89490259

EMAIL: sales.ptksm@gmail.com, mdafaksm@gmail.com

ABOUT US

Bersamaan dengan ini kami ingin memperkenalkan perusahaan kami, dimana perusahaan kami PT.KROMO SAKTI MANDRAGUNA adalah perusahaan yang bergerak pada bidang Electrical equipment yang berkonsentrasi pada Automation Part (Sensor, proximity, photosensor), PLC Part, Control Inverter, Inverter Part IGBT, RECTIFIER, DIODA, dan Industrial Part lainnya. Dengan pengalaman dan jaringan yang luas di industry ini dan bekerjasama dengan prinsipal International memberikan hasil dan kualitas yang tidak diragukan lagi, maka kami berorientasi dibidang Automation, Control And Industrial Supply secara efektif dan konsisten.

VISI

Membangun perusahaan untuk menjadi yang terbaik dalam kualitas, pelayanan Kenyamanan, serta profesionalisme dengan memanfaatkan sumber daya muda yang Berkualitas, jujur, flexibel, dan juga dinamis

MISI

Memberikan pelayanan dan kepuasan terhadap konsumen. membuat kreatifitas baru, inovatif dan menarik dalam kualitas mutu, ketepatan waktu dan juga harga yang kompetitif

FASILITIES MACHINE



**CNC MILLING
500 X 500 X 1000**



**CNC MILLING
500 X 500 X 1000**



**MESIN
EDM ZNC**



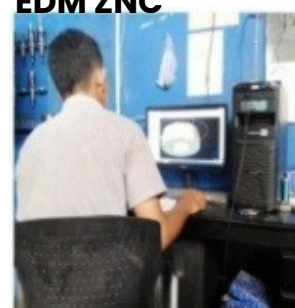
**MILLING
MANUAL**



**SURFACE GRINDING
300 X 600**



**MAKINO
WIRE CUT**



CAD CAM

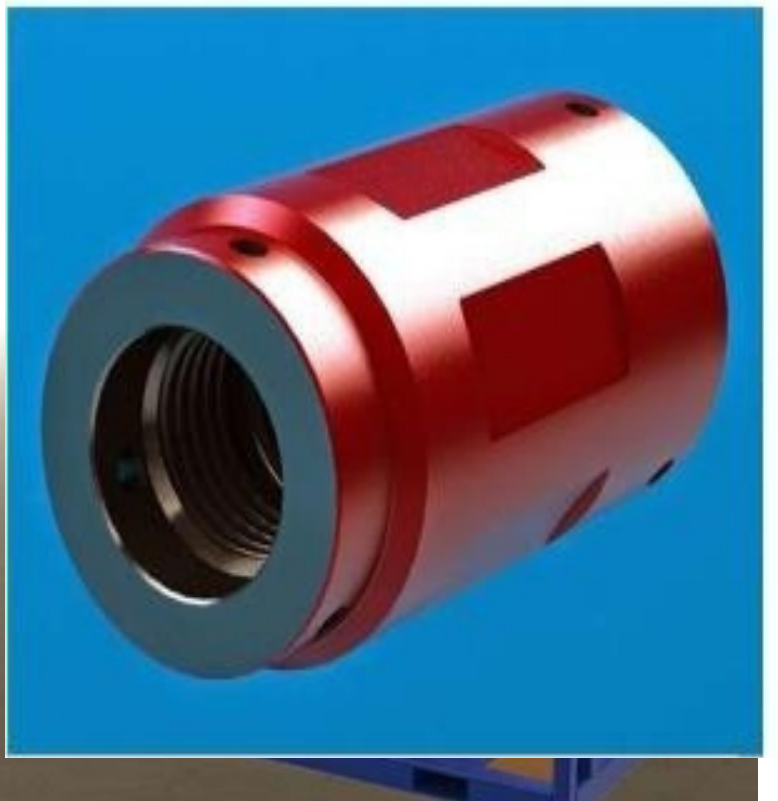
SAMPLE PRODUCT



**ROLLER JACK
STAND**



**SPECIAL
X-OVER**



**POWER
PACK SKID**

**TUBING
CROSSOVER**



**POWER
TONG SKID**



**GUIDE RUBBER
ASSY**



**FLANGES
SPOOL**



**SPLINE GEAR &
CLUTCH SHAFT
PUMPING
MOTOR**



**STATIONARY
GEAR &
KNUCKLE JOINT**



QUICK UNION CROSSOVER



BOH ADAPTER



MANIFOLD



**CASING
SHROUD**



**TEE SPOOL
PIPE**



**WASHING
MACHINE
OP 140**



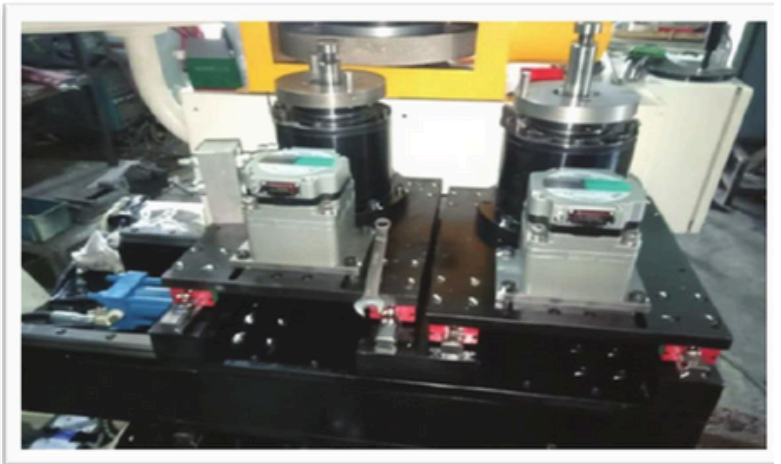
AUTO BLOW MACHINE



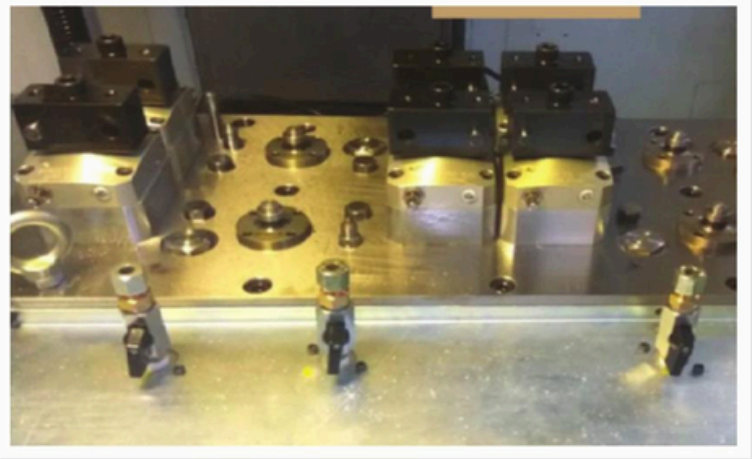
CAMERA CHECK MACHINE



GRINDING MACHINE



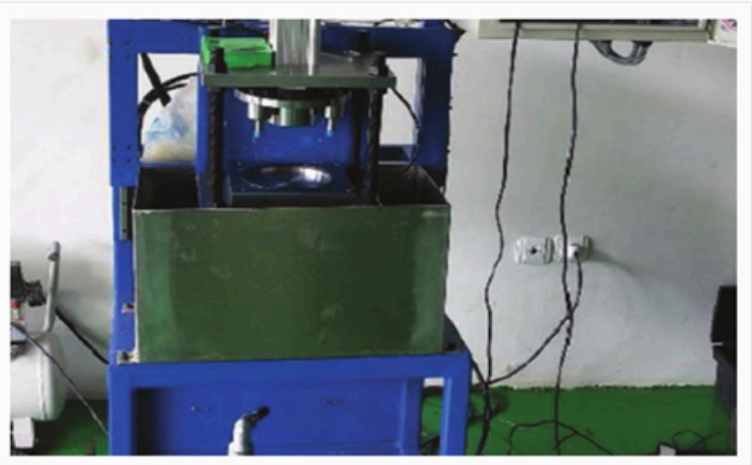
JIG DEBURING



LAPPING MACHINE



LEAK TESTER MACHINE



**WASHING
MACHINE
OP 140**



**MACHINE
REAR
COVER**



**RABIT BOX
WASHING
MACHINE**





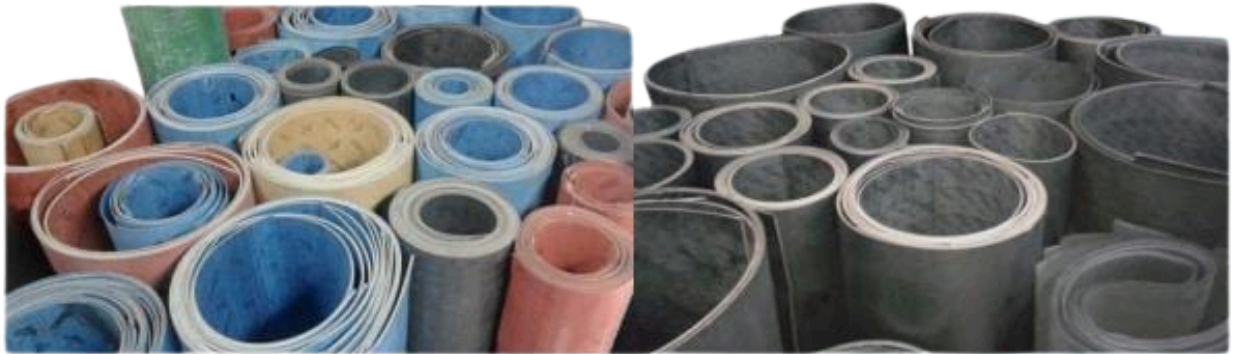
2.1.1 Product Range



Main Brand Intruction



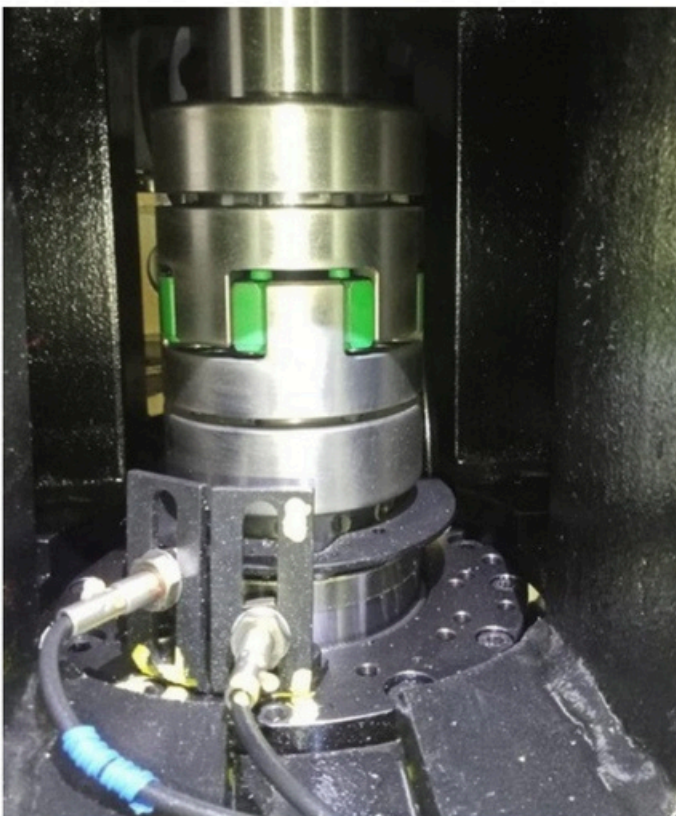
- SPIRAL WOUND GASKET (SWG), KLINGE, KLINGERIT 1000,
- ASBES&NONASBESTOS JOINTING SHEET, TOMBO
- GRAPHITEPLATE, RUBBER GASKET FLANGE / MANHOLE,
- GLAND PACKING



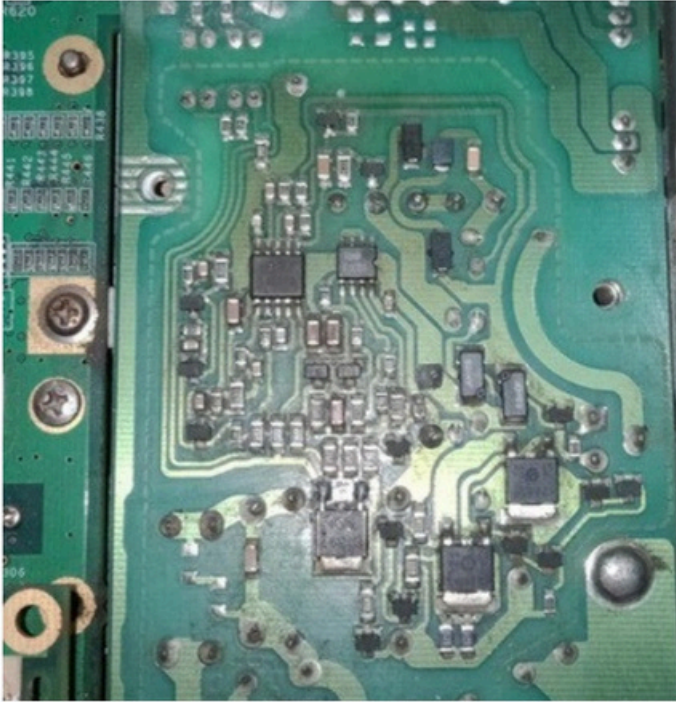
Provide professional spindle repair services supported by in depth diagnostics and precision handling. From mechanical components to electronic control boards, every repair is carried out with accuracy and attention to detail.



Reliable, efficient, and built to minimize downtime



provide professional servo repair services supported by advanced diagnostics and precise handling of electronic control systems. From PCB inspection to component level repair, every step is carried out with accuracy and care.



Built for stability, optimized for performance, and minimizing downtime





BARUNA RAYA LOGISTICS



PT Mitsubishi Krama Yudha Motors and Manufacturing
Automotive Component Manufacturer



PT TONGIL
TECH KOIN



ELMECON MULTIKENCANA
MAKING INDONESIA 4.0 EASY SINCE 1978



PT. Mitrametal Perkasa



PT NATAMAS PLAST
The right choice for your plastic containers



PT. BERKAT MARITIM LINE



CERTIFICATE

This is to Certify that the Management System of

PT. KROMO SAKTI MANDRAGUNA

PERGUDANGAN BIZPAK 3 BLOK D/56A, KEL. KALIBARU, KEC. MEDANSATRIA,
KOTA BEKASI, PROV. JAWA BARAT - INDONESIA

has been audited and found to comply with the requirements of:

ISO 9001:2015 (Quality Management System)

For the Scope of activities described below:

PROVISION OF FABRICATED MACHINING, SUPPLIER EQUIPMENT OIL & GAS

Certificate No.: ID250826013

Date of initial registration

26 August 2025

Date of this Certificate

26 August 2025

Surv. audit on or before/ Certificate Expiry

25 August 2026

Recertification Due

25 August 2028

Validity of this certificate is subject to successful completion of surveillance audit on or before due date, in case surveillance audit not conducted this certificate shall be suspended/cancelled.



Director



LMS Assessments Limited

International Office: Bartle House, Oxford Court, Manchester,
M2 3WQ(United Kingdom) Phone : +44-161394 1117
(Company Regd. No. 11029176 Registered in England and Wales)

LMS Assessment Services Private Limited

Corporate Office: TF14, 15 Aarohi arcade, Sector 16, Munshi Puliya,
Indira Nagar, Lucknow - 16, India Phone : +91 955 464 5464

Visit :- www.lmscert.uk/www.lmscert.com

E-mail :- info@lmscert.uk

LMS-FM-109/REV04

PT. KROMO SAKTI MANDRAGUNA

**Provision Of Fabricated Machining, Trading Engine,
Automation, Supplier Equipment Oil & Gas**

PT. KROMO SAKTI MANDRAGUNA